



Our Altair overhead lift is a lightweight portable lift with a discreet and modern design. Its portability ensures greatly reduced asset investments as the same lift can be used in multiple rooms. The lift is available in three weight capacities.

Unbeatable Comfort

When used with our sling range, the Altair offers unbeatable user comfort. The hanger bar is available in two different sizes with a quick release install that makes it convenient to use for many different users and needs. With weight capacities of 150kg, 200kg and 300kg, the Altair is the optimal solution for facilities that need a versatile lifting solution.

Lift Intelligence

The Altair features an advanced technology platform that allows tracking of lift usage and visualization of collected data. This integrated lift intelligence allows data to be retrieved using our Data and Service Application on a tablet or computer. Detailed

information can be viewed directly in the application or exported to other media for additional analysis.

Optimal Features

The Altair features an easy to use handset as well as a secondary control panel right on the lift. The 3-point suspension offers an even weight distribution and elongated sitting position. The soft-start, soft-stop and constant lifting speed and direction makes lifting a comfortable experience for patients regardless of their weight. The Altair offers two-speed lifting, high battery capacity and convenient battery charging through the hand control.

Accessories



Hanger bar

Quick release for optimal convenience. Order separately. Part no.: 55751 (45cm/17.7") 55764 (55cm/21.7")



Upholstered Cover

Protects user from hanger bar impact. Hanger bar sold separately. Part no. 50866



4-point suspension

Enables 4-point lifting. Placed on leg hook. Part no.: 55619



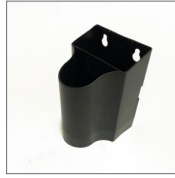
Cart

Simplifies transport of lift between rooms. Convenient sling storage. Part no.: 50346



Powered spreader bar

For use with clip slings in hospital or other care environments. Part no.: Small 92441, Medium 92442, Large 92443



Lift charger

Charger with holder. Easily attaches to wall. Part no. 50899-US



Distance Strap

Reinforced nylon thread and metal hooks. Extend lift strap up to 100cm/39.3". Part no. 20124-xx (specify length)



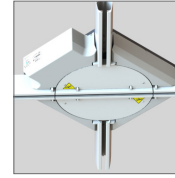
Scale

Medical grade scale. Max. capacity 320kg/705.5lb. ISO and EN compliant. Part no.: 50348, 50345 (Canada)



Handset

Two speed with up/down mode. Input for charging and USB interface. IPX5 water protection rating. Part no.: 71457



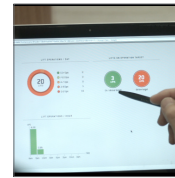
Gates and Turntables

Offering additional lift transfer options on rails. Part no. 55721 (Gate), 91884 (Turntable)



Secondary Control

Secondary control panel on back of lift for emergency stop function. Integrated feature.



Insights

Lift intelligence that facilitates cloud based storage of collected data. Integrated feature.

Technical Specifications

Description	Altair 150	Altair 220	Altair 300
Part Number (Lift)	55200H-[Country Code]	55210H-[Country Code]	55220H-[Country Code]
Part Number (Hanger Bar)	55751 (45cm/17.7") or 55764 (55cm/21.7")	55751 (45cm/17.7") or 55764 (55cm/21.7")	55751 (45cm/17.7") or 55764 (55cm/21.7")
Dimensions (W x H x L)	40cm x 14cm x 30cm 15.7" x 5.5" x 11.8"		
Safe Working Load	150kg/330lb	220kg/484lb	300kg/661lb
Product Weight (Lift)	7.4kg / 16.2lb		
Product Weight (Hanger Bar)	1.3kg/2.8lb (55751) or 1.5kg/3.3lb (55764)		
Battery	2.3Ah, 2x12V		
Battery Charger	Input: 100-240V, AC 50-60 Hz Output: 27.8V, 0.8A DC		
IP Class	Lift: IPX4 Hand Control: IPX5		
Lifting Distance and Speed	Distance: 208cm/81.9" Speed: 1.8m/min - 3m/min — 70"/min - 118"/min		
Approvals	ROHS-2 approved, Tested and approved according to ISO 10535:2006 ETL Listed		
Emergency Lowering	Electronic and Mechanical		

Country Codes: AU-Australia, GB-Great Britain, EU-Europe, JP-Japan, NA-North America

This product is manufactured in accordance with all relevant ISO standards.



Learn more about this product



Follow Us on Social Media



facebook.com/humancarecda



instagram.com/humancaregroup



linkedin.com/company/human-care-ab



pinterest.com/humancaregroup



youtube.com/channel/UC7fyjNH3zTjRxOP1dfr2Da0